

## EARLY ENGAGEMENT PHASE

NOVEMBER 1, 2017 - MARCH 9, 2018

### SERVICES PROVIDED FOR ALL

OUT OF **4,029** SERVICES

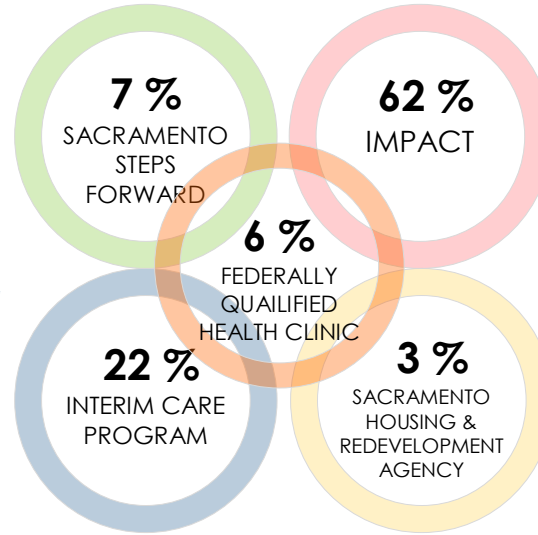
**46%** CARE COORDINATION

**17%** HOUSING COORDINATION

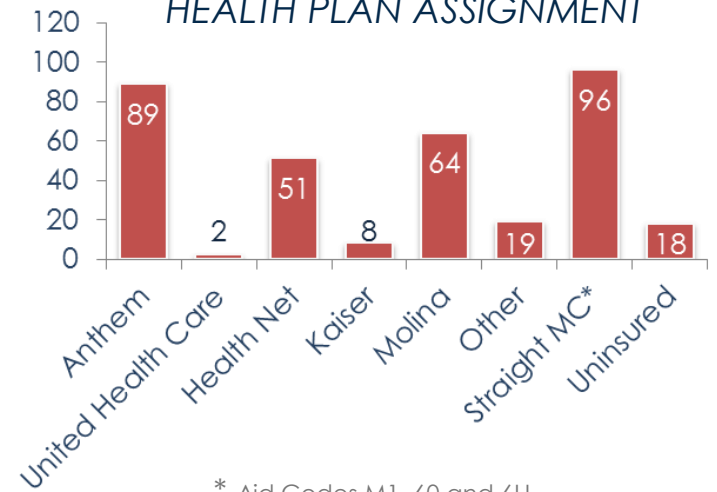
**37%** PROGRAM READINESS COORDINATION



### REFERRAL SOURCE



### HEALTH PLAN ASSIGNMENT

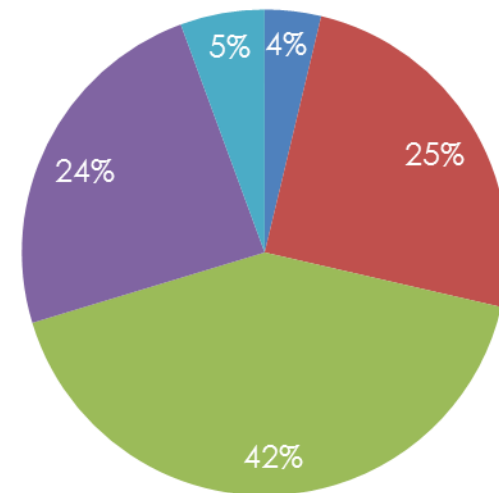
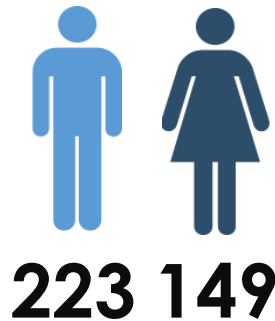


**347** ENROLLED INTO PATHWAYS \*372 TOTAL; **3,866** TOUCHES

### GEOGRAPHIC REACH

REGION	# OF CLIENTS
North	318
East	18
South	30
West	6
<b>TOTAL</b>	<b>372</b>

### GENDER



### AGE

- 18-25
- 26-40
- 41-55
- 56-64
- 65-Up

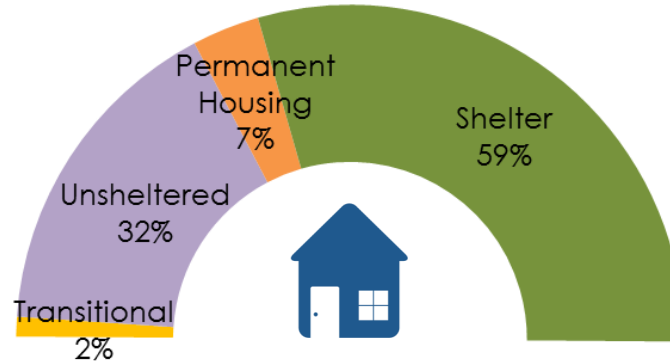
## EARLY ENGAGEMENT PHASE

NOVEMBER 1, 2017 - MARCH 9, 2018

### ETHNICITY

- 4%** American Indian/Alaska Native
- 32%** Black/African American
- 14%** Hispanic, Latino/Spanish
- 1%** Asian/Pacific Islander
- 45%** White
- 3%** Other

### HOUSING DISPOSITION



**Transitional:** Mather Community Campus and Wind Youth Services.  
**Permanent Housing:** Apartment, shared housing and PSH.  
**Shelter:** Volunteers of America, Union Gospel, Winter Shelter, and Salvation Army.

### DISENROLLMENT

DISENROLLMENT REASON	COUNT
3 months of no contact	8
Client request	2
Death	2
Graduation	6
Moved out of county	6
Obtain VA Health Benefits	1
<b>GRAND TOTAL</b>	<b>25</b>

### CURRENT ENROLLEES



**2** Pregnant women



**10** Families



**91%** are homeless



**9%** are permanently/  
transitionally housed