

EARLY ENGAGEMENT PHASE

NOVEMBER 1, 2017 - APRIL 13, 2018

REFERRAL SOURCE

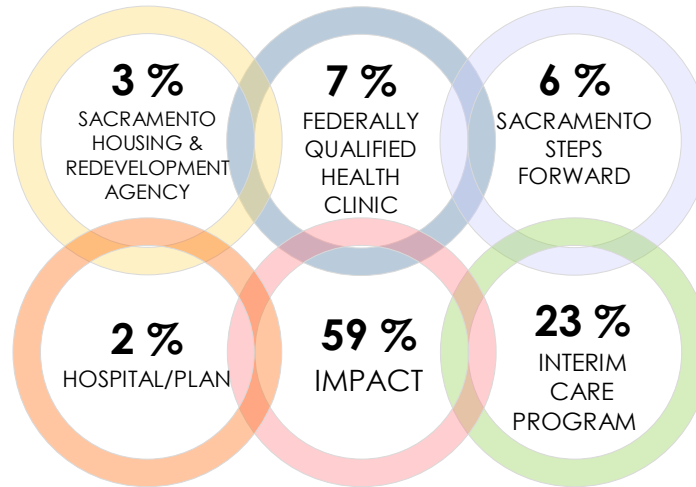
SERVICES PROVIDED FOR ALL

OUT OF **6,117** SERVICES

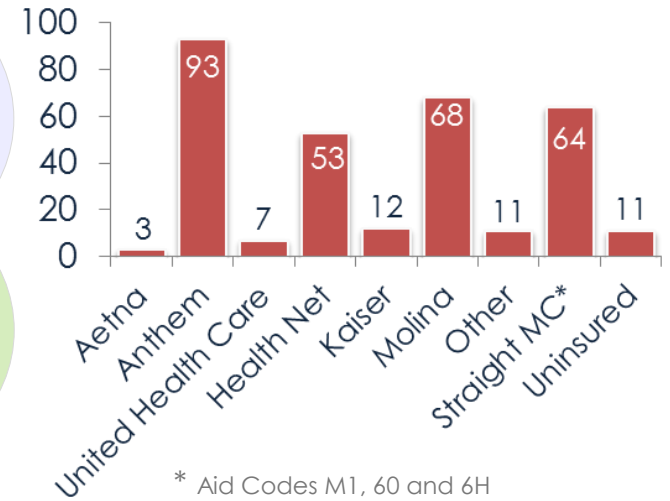
50% CARE COORDINATION

16% HOUSING COORDINATION

34% PROGRAM READINESS COORDINATION



HEALTH PLAN ASSIGNMENT

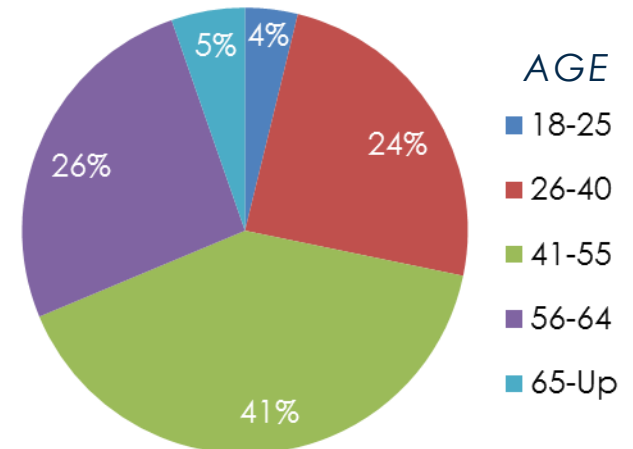
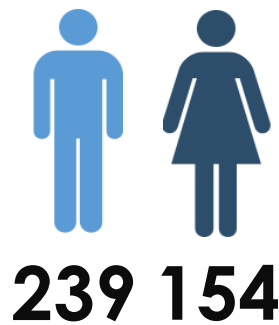


322 ENROLLED INTO PATHWAYS *393 TOTAL; **5,432** TOUCHES

GEOGRAPHIC REACH

REGION	# OF CLIENTS
North	320
East	12
South	56
West	5
TOTAL	393

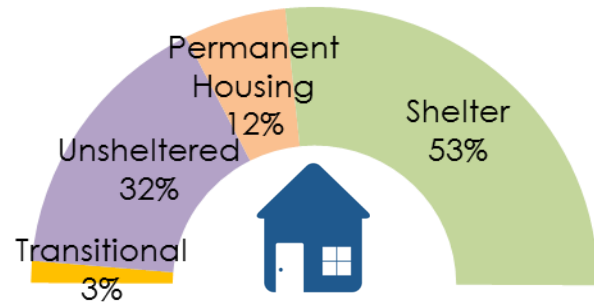
GENDER



EARLY ENGAGEMENT PHASE

NOVEMBER 1, 2017 - APRIL 13, 2018

HOUSING DISPOSITION

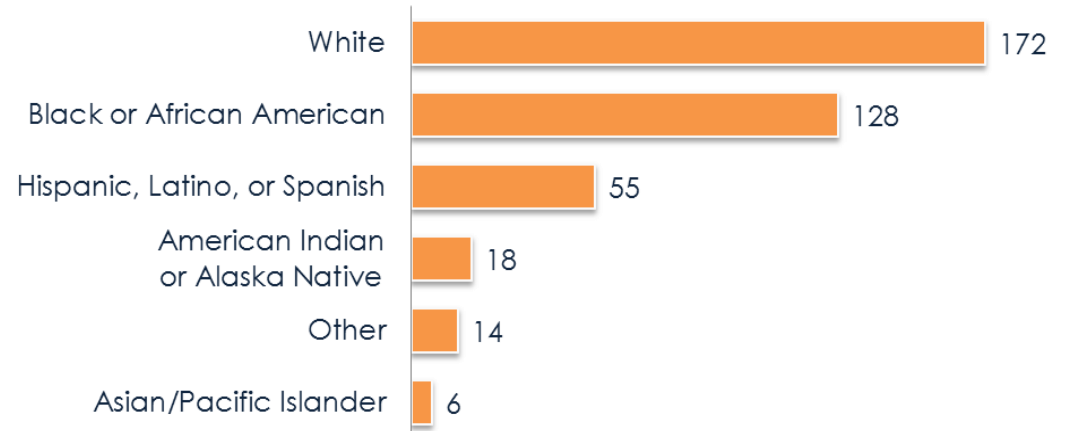


Transitional: Mather Community Campus and Wind Youth Services.

Permanent Housing: Apartment, shared housing and PSH.

Shelter: Volunteers of America, Union Gospel, Winter Shelter, and Salvation Army.

ETHNICITY



CURRENT ENROLLEES



2 Pregnant Women



10 Women
with Children



85% are homeless

**There are currently no enrollees at-risk of homelessness*



15% are permanently
housed/transitional